



LE MANOIR DE LÉON

MUSIC AND LEISURE

RESIDENTIAL
LEISURE
RECORDING
REHEARSAL

▶▶ LE STUDIO... 24/7

The building in which the studio is located was designed and built for this very purpose and use.

The acoustic design by Christian Malcurt was integrated in the structural works (specific treatment of the screed, ventilation, clearance...)

All practical aspects are taken into consideration in order to allow sessions to run smoothly (outdoor access, large doors, sheltered loading dock).

The walls and roofing are perfectly soundproof which allow recording at all times of the day... or night.

■ Music-room ($100\text{m}^2 + 3 \times 10\text{m}^2$ booths)

The acoustic in the studio is designed to sound "live".

The floor is covered with unvarnished oak hardwood floors.

The consistency of the reverberated energy is created by wooden diffuser panels implanted in the ceiling.

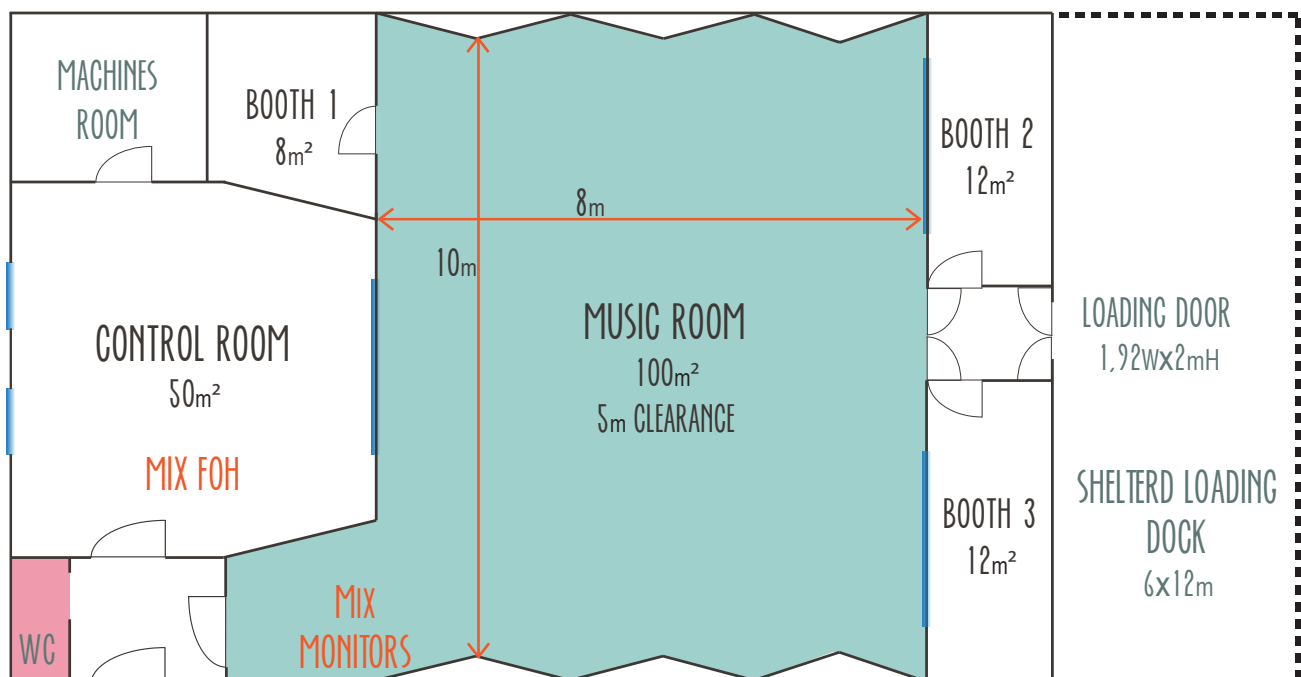
The mural panels are mobile on a vertical axis and offer 2 sides ; either an absorbent or a reflective surface (marble or mirror).

3 (half) glazed isolation booths looking out towards the music room offer 3 different volumes and acoustics. 4 movable acoustic isolation panels allow modular space within the music room.

■ Control-room. ($50\text{m}^2 + 15\text{m}^2$ machines room)

The acoustic design is based on the LEDE concept (Live End Dead End). With a symmetrical layout , the front of the room is fitted with different absorbent volumes (bass traps) and the rear is equipped with diffusers (multi sized quadrilateral wood panels).

In order to offer the best working conditions, the control room is air-conditioned and benefits from daylight (can be blackened out by remote control), as well as a panoramic view of the music room.





LE MANOIR DE LÉON

MUSIC AND LEISURE

RESIDENTIAL
LEISURE
RECORDING
REHEARSAL

FIGE TECHNIQUE (MAI 05.2016)

MUSIC ROOM

Available surface 8x10m
Clearance : 5m
No lighting grid
Ground level lounding access
Access door width : 190 cm width x 205 cm height
Truck access
Shelterd loadind dock



CONTROL ROOM

FOH or monitor desk can be set up
in the studio's control room

MONITORING

ATC ARM 5 ways custom mains (x2)
Yamaha NS-10 (x2)
Genelec 1031A (x2)

ADDITIONAL BOOTH

3 booths... dressing room, desk, storage

POWER

on stage : 6 x 220V 16A mono + 1 x 32A 380V P17
control room : 6 x 220V 16A mono



MONITOR WEDGES

8 wedges l.acoustics 500w
15"+1" / actif/passif
2 side l.acoustics 500w
15"+1" / actif/passif
Amplificateur lab gruppen 3400
+ processeur

MONITOR CONSOLE

Console midas verona 400 32
+8 st 8aux/8group/4matrix
Multicable 60 paires + patch 60

OUTBOARD GEAR

Reverb lexicon pcm70
Reverb tc electronics 2 chanel/ 2 effect
Delay tc electronics multi tap
comp/limit/de esueur bss 4 canaux

DI'S

Summit Audio TD100
Avalon U5 DI Preamp (x2)
SCV (x2)
Countryman Type 10 Active DI (x1)
Radial J48 (x2)
K Sound (2)

HEADPHONES

Hear back Hub pro 16
Hear back Pro 16 (x6)

AKG K701 (x2)
Audio Technica ATH-M50 (x2)
Beyerdynamic DT770 (x3)
Beyerdynamic DT770 pro (x2)
Sennheiser HD25 (x2)
Sony MDR 7506 (x4)

MICROPHONES

Sm58 (4)
Sm57 (4)
Shure beta 52a
Sennheiser bf421
Sennheiser e604
Akg electret 3 directivite1

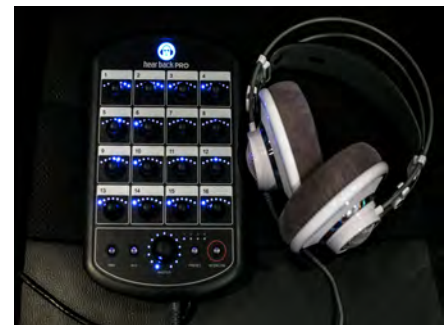
Audix D4 (x2)

Audix D6
Beyerdynamic M 88
Sennheiser MD421 (x3)

BACKLINE

Bosendorfer Grand Piano C228
Fender Rhodes Mark I Stage 73
Fender Rhodes bass Silver sparkle
Fender Twin Reverb
Marshall JCM800 combo
Snare : Sonor Signature HLD 593
14" x 14" bell bronze shell
drums : Custom 77 Mapple custom shop
bd 22"- ft 16"- r 13" & 14"

ANY GEAR RENTAL UPON REQUEST



OTHERS

WIFI connection
Projection screen
240x165cm - diagonal : 266 cm

BOOKING CONTACT

Karine BOEKLAGE
+33 (0)9 53 32 34 67
contact@lemanoirdeleon.fr



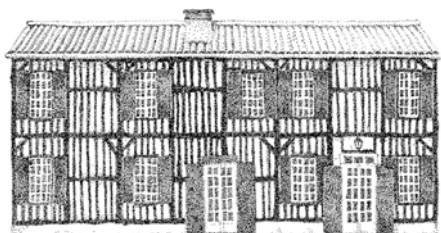
www.lemanoirdeleon.fr



LE MANOIR DE LÉON

MUSIC AND LEISURE

► RESIDENTIAL STUDIO ◀◀



Located at the heart of the Landes forest, 10 minutes away from the beaches, between Biarritz and Bordeaux, the Manoir de Léon with its 1.5ha park and 3 independent buildings, can host up to 22 people in a cosy and cared for atmosphere.

Formerly Studio du Manoir, from 1980 to 2010, **Siouxsie & the Banshees, Alain Souchon, EMF, Etienne Daho** and so many others... have shaped the soul of this now renowned studio. Today, the beautiful and mischievous Léon, restores its pedigree to this totally unique resort.

Come and see for yourself...

► LOCATION... between Landes forest and ocean

Le Manoir de Léon
5037, route de Laguens
40550 LEON

25 minutes from DAX TGV train station
50 minutes from BIARRITZ domestic airport
1h20 minutes from BORDEAUX international airport

► TECHNICAL & LOGISTIC PLATFORM – CATERING CONCIERGE SERVICE



Music Instruments, outboards, you name it, we will take care of the rental at a reasonable market price.



We can provide full-board or the occasional lunch, dinner or picnic basket. Our in-house chef will be sure to please every palette and taste catering to your dietary requirements.



Car rental, ground transfers, private chauffeur, childcare, personal training, hairdresser, beautician, physiotherapist, osteopath, massages, dry cleaning....

► ACTIVITIES – SPORT – LEISURE

On resort : Swimming pool, badminton and volley ball net, pétanque, table tennis, bikes (cycle paths nearby).

In the area :



Ocean beach,
lake



Horse
riding



Local
specialities



Hiking
trails



Golf
course,



Kart
racing

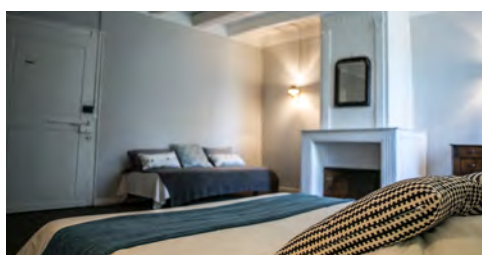
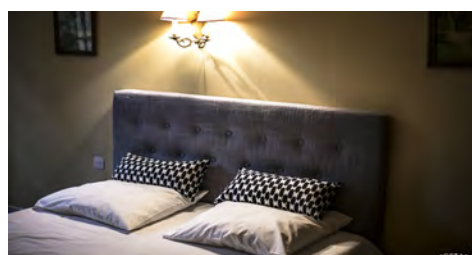


LE MANOIR DE LÉON

MUSIC AND LEISURE

RESIDENTIAL
LEISURE
RECORDING
REHEARSAL

▶ LE MANOIR (400 m²)



■ GROUND FLOOR (200 m²)



- 9 bedrooms
(9 double beds – 4 single beds)
- 8 bathrooms
- 1 dining room with fireplace
- 1 living room
- 1 fully equipped kitchens
- 1 sheltered patio

■ FIRST FLOOR (200 m²)



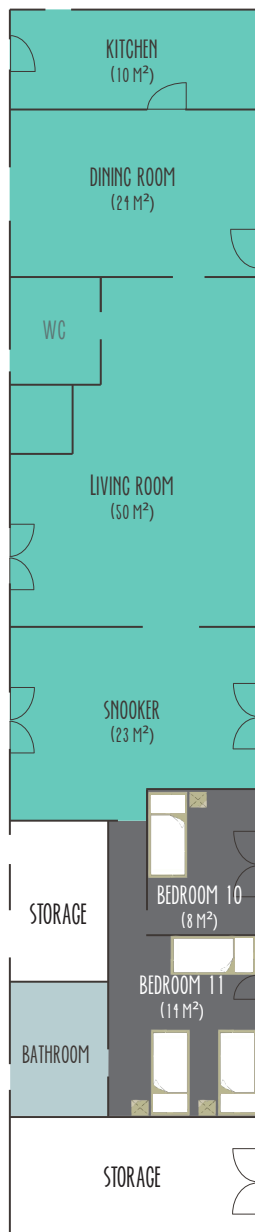


LE MANOIR DE LÉON

MUSIC AND LEISURE

RESIDENTIAL
LEISURE
RECORDING
REHEARSAL

▶ LA LONGERE (170 m²)



- 2 bedrooms (4 single beds)
- 1 bathroom - 2 WC
- 1 dining room
- 1 living room with fireplace
- 1 snooker
- 1 fully equipped kitchen
- 1 patio

