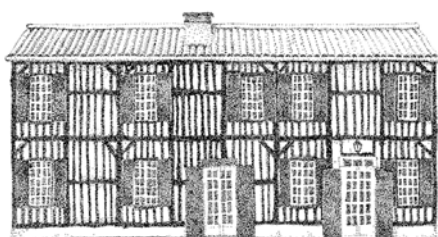
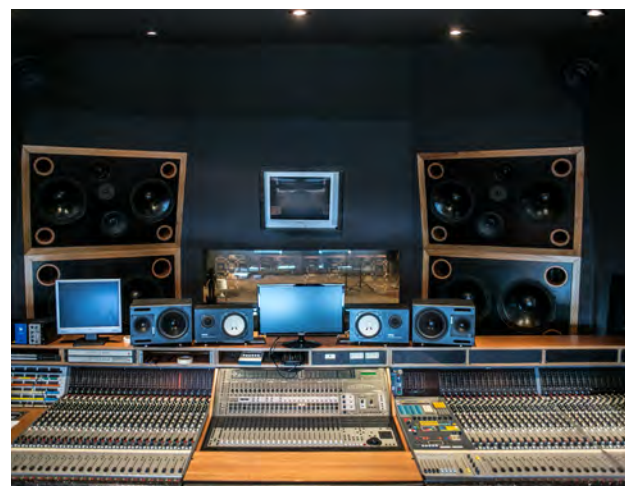




# LE MANOIR DE LÉON

## MUSIC AND LEISURE

### ► RESIDENTIAL NEVE RECORDING STUDIO ◀



Located at the heart of the Landes forest, 10 minutes away from the beaches, between Biarritz and Bordeaux, the Manoir de Léon with its 1.5ha park and 3 independent buildings, can host up to 22 people in a cosy and cared for atmosphere.

Formerly Studio du Manoir, from 1980 to 2010, **Siouxsie & the Banshees, Alain Souchon, EMF, Etienne Daho** and so many others... have shaped the soul of this now renowned studio. Today, the beautiful and mischievous Léon, restores its pedigree to this totally unique resort.

Come and see for yourself...

### ► LOCATION... between Landes forest and ocean

Le Manoir de Léon  
5037, route de Laguens  
40550 LEON

25 minutes from DAX TGV train station  
50 minutes from BIARRITZ domestic airport  
1h20 minutes from BORDEAUX international airport

### ► TECHNICAL & LOGISTIC PLATFORM – CATERING CONCIERGE SERVICE



Music Instruments, outboards, you name it, we will take care of the rental at a reasonable market price.



We can provide full-board or the occasional lunch, dinner or picnic basket. Our in-house chef will be sure to please every palette and taste catering to your dietary requirements.



Car rental, ground transfers, private chauffeur, childcare, personal training, hairdresser, beautician, physiotherapist, osteopath, massages, dry cleaning...

### ► ACTIVITIES – SPORT – LEISURE

On resort : Swimming pool, badminton and volley ball net, pétanque, table tennis, bikes (cycle paths nearby).

In the area :



Ocean beach,  
lake



Horse  
riding



Local  
specialities



Hiking  
trails



Golf  
course,



Kart  
racing

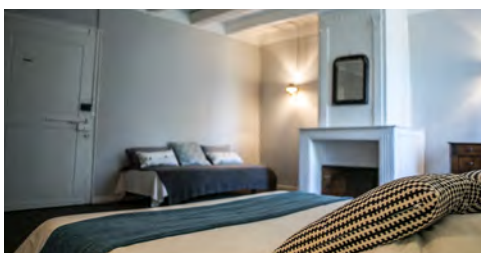
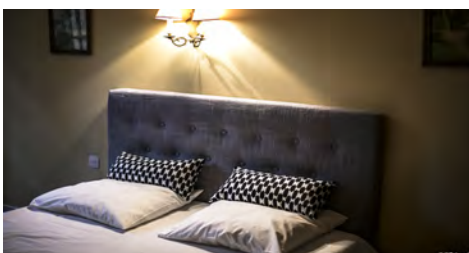


# LE MANOIR DE LÉON

MUSIC AND LEISURE

RESIDENTIAL  
LEISURE  
RECORDING

## LE MANOIR (400 m<sup>2</sup>)



## GROUND FLOOR (200 m<sup>2</sup>)



- 9 bedrooms (9 double beds – 4 single beds)
- 8 bathrooms
- 1 dining room with fireplace
- 1 living room
- 1 fully equipped kitchens
- 1 sheltered patio

## FIRST FLOOR (200 m<sup>2</sup>)





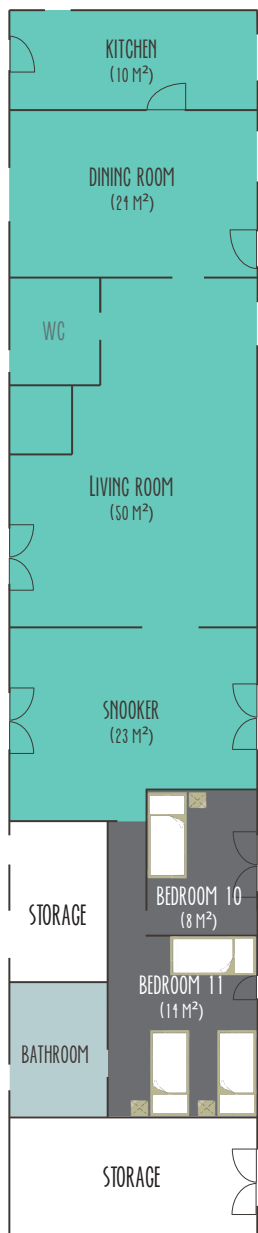


# LE MANOIR DE LÉON

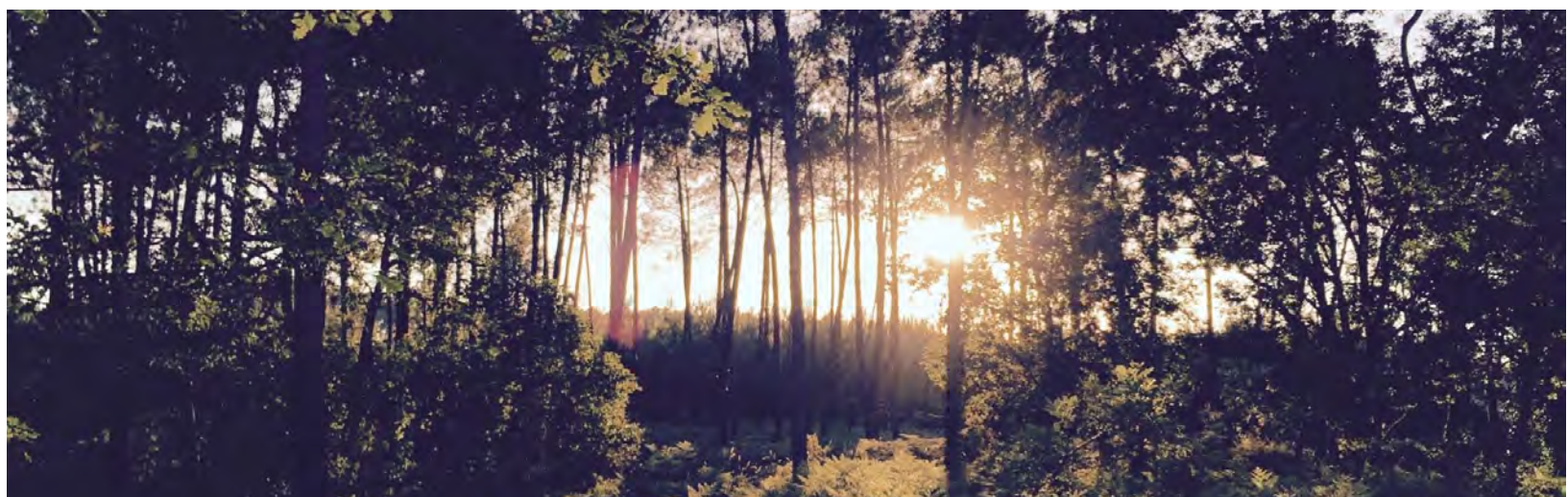
MUSIC AND LEISURE

RESIDENTIAL  
LEISURE  
RECORDING

## ► LA LONGERE (170 m<sup>2</sup>)



- 2 bedrooms (4 single beds)
- 1 bathroom - 2 WC
- 1 dining room
- 1 living room with fireplace
- 1 snooker
- 1 fully equipped kitchen
- 1 patio







# LE MANOIR DE LÉON

## MUSIC AND LEISURE

RESIDENTIAL  
LEISURE  
RECORDING

### ► LE STUDIO... 24/7

The building in which the studio is located was designed and built for this very purpose and use.

The acoustic design by Christian Malcurt was integrated in the structural works (specific treatment of the screed, ventilation, clearance...)

All practical aspects are taken into consideration in order to allow sessions to run smoothly (outdoor access, large doors, sheltered loading dock).

The walls and roofing are perfectly soundproof which allow recording at all times of the day... or night.

#### ■ Music-room (100m<sup>2</sup> + 3x10m<sup>2</sup> booths)

The acoustic in the studio is designed to sound "live".

The floor is covered with unvarnished oak hardwood floors.

The consistency of the reverberated energy is created by wooden diffuser panels implanted in the ceiling.

The mural panels are mobile on a vertical axis and offer 2 sides ; either an absorbent or a reflective surface (marble or mirror).

3 (half) glazed isolation booths looking out towards the music room offer 3 different volumes and acoustics. 4 movable acoustic isolation panels allow modular space within the music room.

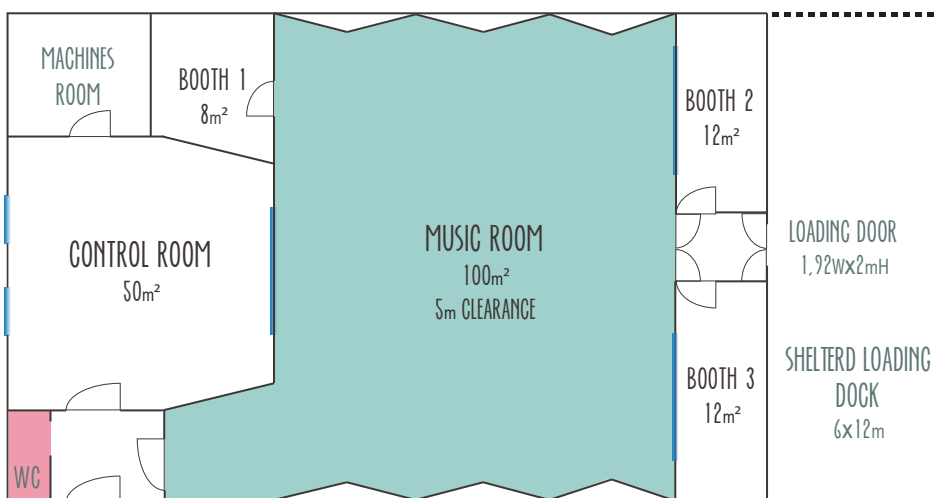
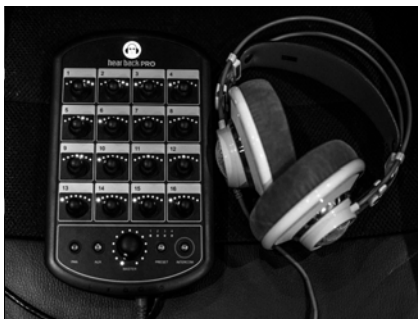
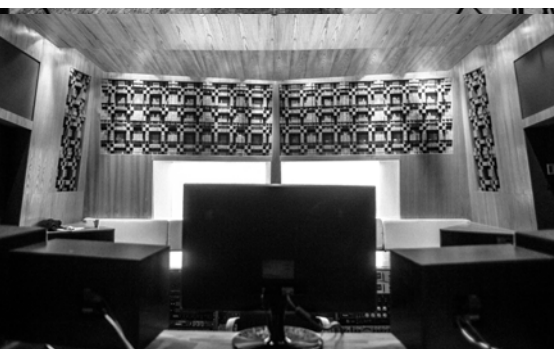
AC Power : 6 x 220V 16A mono + 1 x 32A 380V P17

#### ■ Control-room. (50m<sup>2</sup> + 15m<sup>2</sup> machines room)

The acoustic design is based on the LEDE concept (Live End Dead End). With a symmetrical layout , the front of the room is fitted with different absorbent volumes (bass traps) and the rear is equipped with diffusers (multi sized quadrilateral wood panels).

In order to offer the best working conditions, the control room is air-conditioned and benefits from daylight (can be blackened out by remote control), as well as a panoramic view of the music room.

WIFI connection.





# LE MANOIR DE LÉON

## MUSIC AND LEISURE

RESIDENTIAL  
LEISURE  
RECORDING

### ► EQUIPMENT LIST (02.2018)

#### CONSOLE

NEVE 8128 44 inputs

#### DAW

Avid Pro Tools 12 HD (updated)  
Avid 192 I/O (x4) 32 in / 56 out  
Mac Pro hexacore 3,5ghz -32Gb ram -ssd256Gb

#### MULTITRACK RECORDING

Studer A827  
Otari MTR 12 2 Track 1/4" Machine

#### MONITORING

ATC ARM 5 ways custom mains (x2)  
Yamaha NS-10 (x2)  
Genelec 1031A (x2)

#### MIC PRE -AMPS

1 x al.so MP2 MK2  
al.so MP5  
Avalon 737

#### DYNAMICS

Amek 9098i  
BSS DPR 402 stereo comp deeseur  
DBX 903 (x2)  
Aphex compellor stereo  
2 x Urei 1176 blackface  
Al.SO Hellax  
Anthony DeMaria Labs CL 1500 Stereo Valve  
Compressor  
Chandler LTD-2 (x2)  
Drawmer DS201 Dual Noise Gate  
Empirical Labs EL-8X Distressor with "British  
Mode" Option (x2)  
Universal Audio 2176LM Compressor

#### REVERBS

Lexicon 480L  
Sony Dps-R7  
Yamaha REV1 Digital Reverb

#### DELAYS AND FX PROCESSORS

Eventide H3000 SE Ultra-Harmonizer  
Publison DHM89  
Sony DSP-D7 Digital Delay (x2)

#### DI'S

Summit Audio TD100  
Avalon U5 DI Preamp (x2)  
SCV (x2)  
Countryman Type 10 Active DI (x1)  
Radial J48 (x2)  
K Sound (2)

#### HEADPHONES

Hear back Hub pro 16  
Hear back Pro 16 (x7)  
AKG K701 (x2)  
Audio Technica ATH-M50 Headphones (x2)  
Beyerdynamic DT770 (x1)  
Beyerdynamic DT770 pro (x3)  
Sennheiser HD25 (x2)  
Sony MDR 7506 (x4)

Any gear rental upon request.

#### MICROPHONES

AKG C 414 XLS (x1)  
AKG C 451 E / CK5 (x2)  
Audix D4 (x2)  
Audix D6  
Beyerdynamic M 88  
Coles 4038 (x2- paired)  
CR3A VTL (x2)  
Electrovoice RE 20  
MXL 990 (x2)  
MXL V69  
NS10 Boomer Subkick  
Neumann SM 69  
Neumann U47 Short Body Nuviator (tube)  
Neumann U 67 ORTF special series. Tube  
Neumann U89i  
Oktava MK-012 (x2)  
Oktava MK 101 (x2)  
PZM (x2)  
Royer R 121  
Sanken CU-44X  
Sennheiser MD 441 (x3)  
Sennheiser MD421 (x3)  
Shure SM57 (x4)  
Studer SK1 501

#### BACKLINE

Bosendorfer Grand Piano C228  
Fender Rhodes Mark I Stage 73  
Fender Rhodes bass Silver sparkle  
Korg CX3  
Fender Twin Reverb  
Marshall MG combo  
Snare : Sonor Signature HLD 593  
14" x 14" bell bronze shell  
drums : Custom 77 Mapple custom shop  
bd 22"- ft 16"- r 13" & 14"

### BOOKING CONTACT

Karine BOEKLAGE  
+33 (0)9 53 32 34 67  
+33 (0)6 25 39 71 13  
contact@lemanoirdeleon.fr



[www.lemanoirdeleon.fr](http://www.lemanoirdeleon.fr)

